



OAKFIELD



Scholars Walk, Bexhill-On-Sea

Asking Price £155,000



1



1



1



D

Scholars Walk, Bexhill-On-Sea

This one-bedroom top floor flat is ideally located in a modern purpose-built block on the sought-after St. Mary's development in Bexhill.

The property offers a spacious open-plan living room, complete with a fitted kitchen that includes integrated appliances such as an electric oven and hob, fridge freezer, dishwasher, and washing machine. The flat also features a comfortable double bedroom with a fitted wardrobe and a well-appointed bathroom with a white suite and a shower over the bath.

Additional benefits include an allocated parking space, double glazing throughout, and electric heating, making this an ideal home for those seeking convenience and comfort.





Reception Room

11'7" x 11" (3.53m x 3.35m)

Kitchen

8'6" x 5'5" (2.59m x 1.65m)

Master Bedroom

11'7" x 10" (3.53m x 3.05m)

Bathroom

6'9" x 6'6" (2.06m x 1.98m)

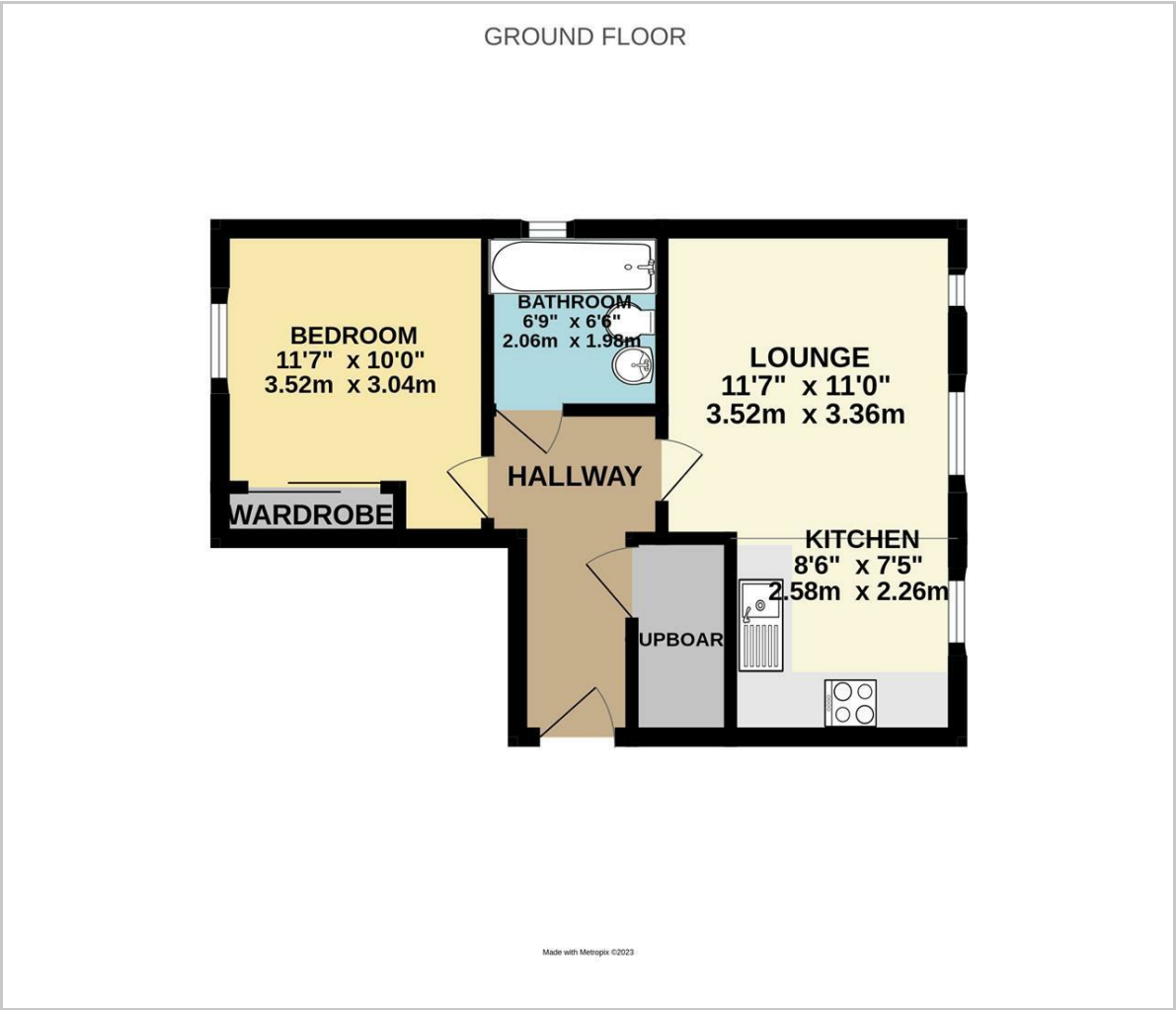
Council Tax Band A- £1701.55

Lease Information

The seller advise that the property is offered as leasehold with approximately 181 years remaining on the 200 year lease. The annual service charge is £1,231. The ground rent is £165 per annum. The agent has not had sight of confirmation documents and therefore the buyer is advised to obtain verification from their solicitor or surveyor.



Floor Plan

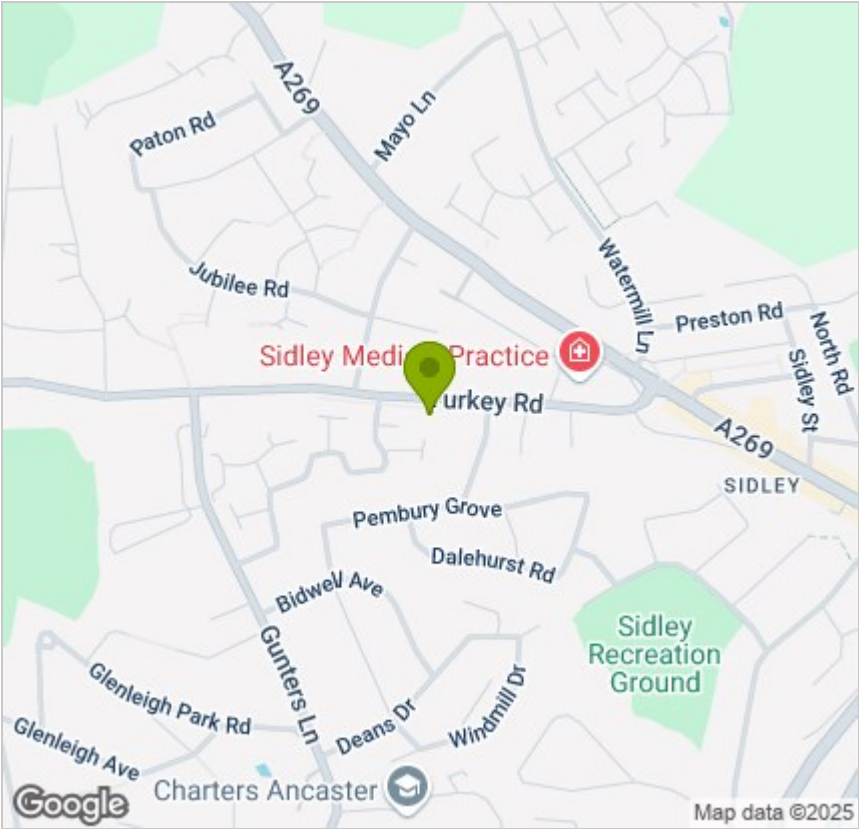


Viewing

Please contact us on 01424 224700 if you wish to arrange a viewing appointment for this property or require further information.

These particulars, whilst believed to be accurate are set out as a general outline only for guidance and do not constitute any part of an offer or contract. Intending purchasers should not rely on them as statements of representation of fact, but must satisfy themselves by inspection or otherwise as to their accuracy. No person in this firms employment has the authority to make or give any representation or warranty in respect of the property.

Area Map



Energy Efficiency Graph

